

# Shibetsu City Museum

## Shibetsu Public Exhibition Hall

Local History / Nature / Culture and Arts

### Outdoor Exhibit Information



#### ▲ Hoan-den

Hoan-den were buildings that housed portraits (photographs) of the emperor and empress and a copy of the Imperial Rescript on Education before and during the war.

#### Green Sports

Visitors are free to enjoy the local nature on our jogging path and walking trail at their leisure. In winter, it is possible to enjoy a stroll using snowshoes.



#### ◀ Tondenhei-oku

Shibetsu was settled in 1899 by the northernmost and final regiment of tondenhei settlers. Inside the tondenhei-oku residence, visitors can view an exhibit recreating the daily lives of the settlers of that time.



### Visitor Information

#### Museum Hours:

9:30 a.m. - 4:30 p.m. (from April to September)  
10:00 a.m. - 4:30 p.m. (from October to March)

#### Closed:

Mondays & Tuesdays, New Year's Holiday (December 29 - January 3)  
Winter Collection Organization Period (January - February)

#### Admission:

Admission is free for children of junior high school age and younger.  
Adult (including high school students) 100 yen, Groups (20 or more people) 80 yen

#### Address:

2554 Nishishibetsu-cho, Shibetsu, Hokkaido 095-0056

#### Telephone:

0165-22-3320

#### Travel Information

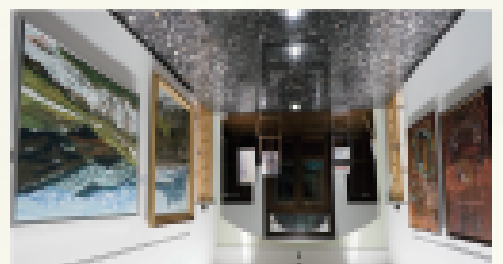
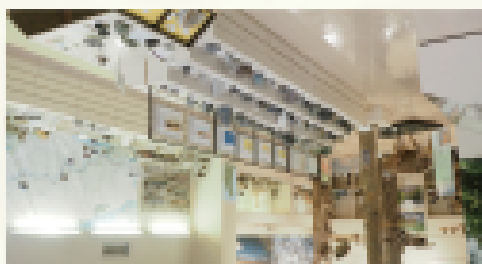
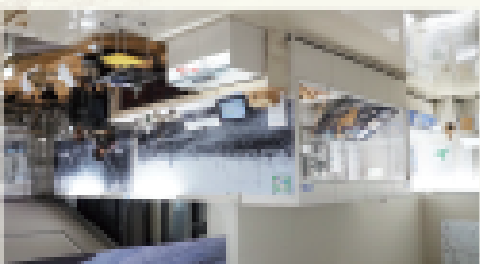
Shibetsu City



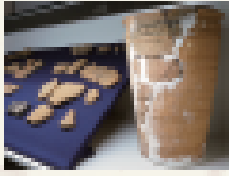
Supported by the Agency for Cultural Affairs, Government of Japan in the fiscal year 2020



Shibetsu City Museum is a regional museum showcasing the local history, nature, culture, and arts of the area. Its well-lit interior and the incorporation of numerous materials and hands-on displays make for a visitor-friendly exhibition. We also provide a wide variety of both on- and off-site lectures and actively share information regarding archived materials and the results of research and study activities. We endeavor to be a community-based museum and are working daily towards that goal as a repository for various local materials and information.

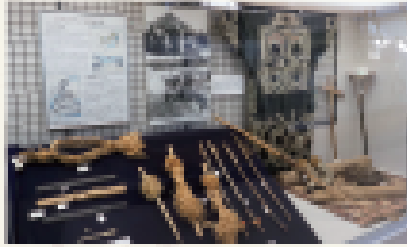


## History Gallery



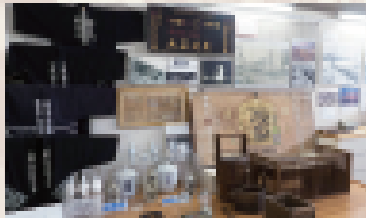
### Pre-settlement History

Visitors can get a glimpse of the history of Shibetsu before it was settled through the excavated artifacts from the approximately 6,000-year-old Kamishibetsu Archaeological Site, a registered cultural property of Shibetsu City, as well as from articles of clothing and other items used by the indigenous Alnu people of Hokkaido on display.



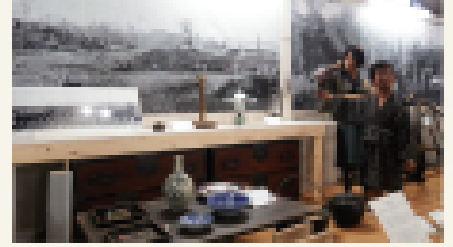
### Development of the Town

Shibetsu would go on to develop a variety of industries such as agriculture, forestry, and food service. Visitors can enjoy an exhibit representing the industries that formed the foundation for Shibetsu's development.



### Settlement

This area was settled and the development of Shibetsu as a town began in 1899 by the *tondenhei* settlers. Here visitors can view a recreation of their daily lives at that time and the tools they used.



### Life in Shibetsu

The standard of living improved in the area and the people gained access to many convenient tools. Here visitors can view the tools that the people of Shibetsu used in their daily lives through into the Showa era and get a feeling for how they lived.



## Nature Gallery



### Nature in the Upper Teshio River Basin

Teshio River, the northernmost major river in Japan, originates in the Teshiodake Prefectural Natural Park and flows through the center of the city. The area is home to a variety of wildlife with salmon and trout running up the river to spawn and wild birds such as swans and ducks using the area to rest their wings.



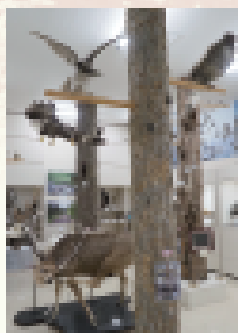
### Formation of the Land

A wide variety of rocks can be found around Shibetsu from which the history of the land can be learned.

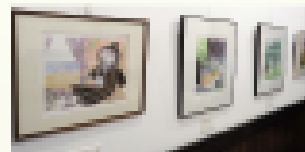


### Wildlife of the Northern Country

The heavy snowfall and cold climate of Shibetsu due to its location in the north of Hokkaido make it home to many species of wildlife characteristic to the Northern Country including the brown bear, Ezo red fox, and white-tailed eagle.

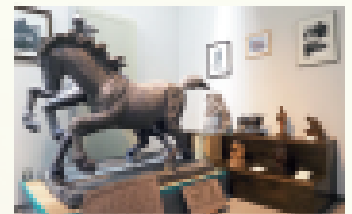


## Culture and Arts Gallery



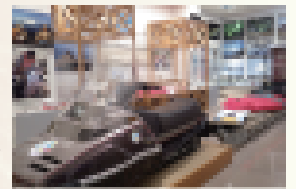
### Local Arts

Works by artists with strong ties to Shibetsu such as sculptor Kōkō Abe and printmaker Nobuko Koike are on display.



### People with Connections to Shibetsu

Materials from the expedition of actress and explorer Masako Izumi, the first Japanese woman to reach the North Pole, as well as items related to the indigenous people of the North Pole are on display.



A collection of trophies and other items related to former world champion boxer Koichi Wajima are on display.

### Shibetsu Public Exhibition Hall

Built in 1989, this building is a reconstruction of the original Shibetsu Public Hall which was used as the chamber for the town council, an assembly hall, and a community center.

